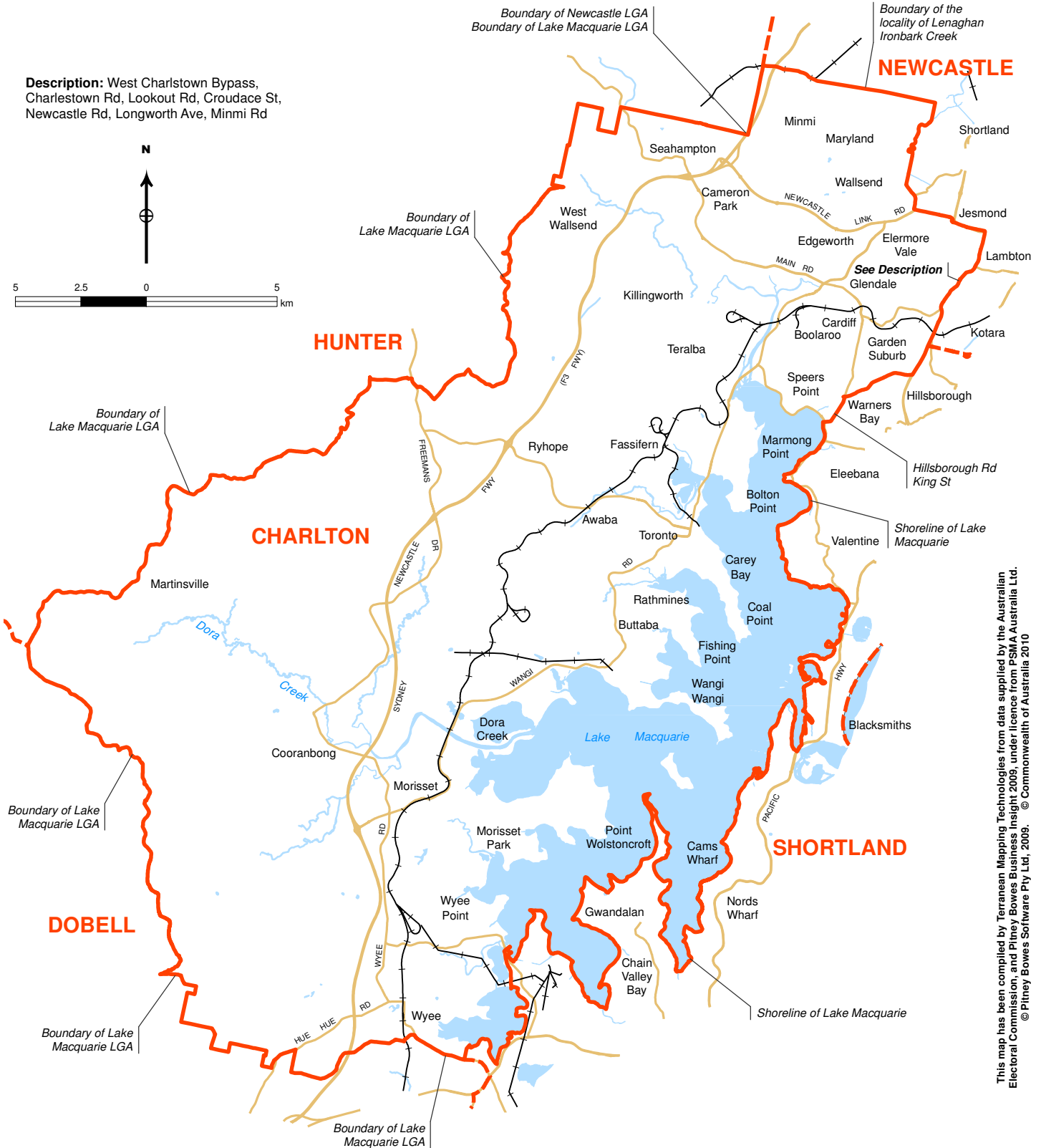
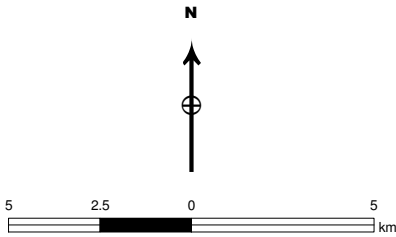






Commonwealth Electoral Division of **CHARLTON**

Boundary gazetted 22 December 2009

Description: West Charlstown Bypass, Charlestown Rd, Lookout Rd, Croudace St, Newcastle Rd, Longworth Ave, Minmi Rd



Divisional boundary 
 Adjoining boundary 
 Size of division 688 km²

Note:
 Local Government Area descriptions are current 2006.
 Federal electoral boundaries follow the centre of features unless otherwise advised.

This map has been compiled by Terranean Mapping Technologies from data supplied by the Australian Electoral Commission, and Pitney Bowes Business Insight 2009, under licence from PSM/A Australia Ltd. © Pitney Bowes Software Pty Ltd, 2009. © Commonwealth of Australia 2010

NSW-CHARLTON-2009